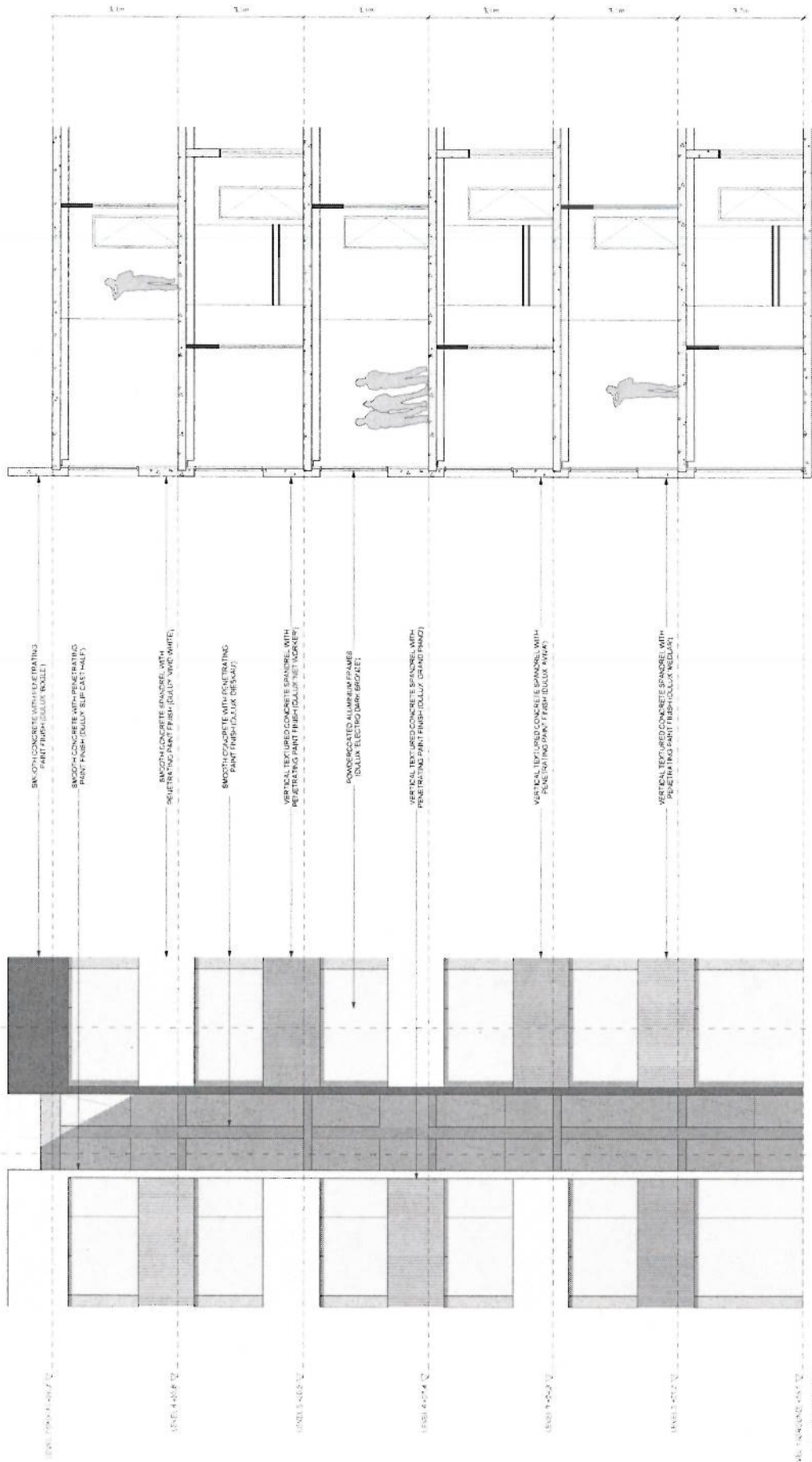


# ATTACHMENT A



SMOOTH CONCRETE WITH EXTERIOR PAINTS  
(PAINT FINISH-DULLUX ROULET)

SMOOTH CONCRETE WITH PENETRATING  
PAINT FINISH-DULLUX SLIP CAST 141F)

SMOOTH CONCRETE SPANREL WITH  
PENETRATING PAINT FINISH-DULLUX VINC WHITE)

SMOOTH CONCRETE WITH PENETRATING  
PAINT FINISH-DULLUX DESAUL)

VERTICAL TEXTURED CONCRETE SPANREL WITH  
PENETRATING PAINT FINISH-DULLUX NET NOCKEY)

POWDER COATED ALUMINIUM FRAMES  
(DULLUX ELECTRO DARK BRONZE)

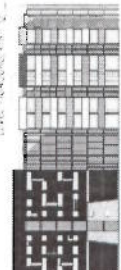
VERTICAL TEXTURED CONCRETE SPANREL WITH  
PENETRATING PAINT FINISH-DULLUX COYARD PANG)

VERTICAL TEXTURED CONCRETE SPANREL WITH  
PENETRATING PAINT FINISH-DULLUX ANVAY)

VERTICAL TEXTURED CONCRETE SPANREL WITH  
PENETRATING PAINT FINISH-DULLUX MEDIAN)

2 DETAILED SECTION-BUILDERS B  
SCALE: 1:50

1 DETAILED SECTION-BUILDERS B  
SCALE: 1:50



KEY - BUILDING & SOUTHERN ELEVATION

<p>McEvoy + George Streets Wellington NSW</p>		<p>A405</p>	
<p>TYPICAL DETAILED SECTIONS</p>		<p>SCALE: 1:50</p>	
<p>GENERAL AND SPECIAL PAINTS LISTED IN THIS DOCUMENT ARE SUBJECT TO CHANGE WITHOUT NOTICE. THE CLIENT ACCEPTS LIABILITY FOR ANY DAMAGE TO THE BUILDING OR PERSONS ARISING FROM THE USE OF THE PRODUCTS LISTED IN THIS DOCUMENT. THE ARCHITECT HAS ADVISED THE CLIENT THAT THE PRODUCTS LISTED IN THIS DOCUMENT ARE SUBJECT TO CHANGE WITHOUT NOTICE. THE ARCHITECT HAS ADVISED THE CLIENT THAT THE PRODUCTS LISTED IN THIS DOCUMENT ARE SUBJECT TO CHANGE WITHOUT NOTICE. THE ARCHITECT HAS ADVISED THE CLIENT THAT THE PRODUCTS LISTED IN THIS DOCUMENT ARE SUBJECT TO CHANGE WITHOUT NOTICE.</p>			